



extreme
ENGINEERING

Small Footprint
Suspended Dark Ride / Laser Tag Coaster
2021



SKY TAG

Laser Tag In The Sky

*Illustration of ride vehicle may slightly vary from actual product.



CLOUD COASTER



Experience the family-friendly, award winning roller coaster of a lifetime.

This is a family-friendly, action packed, suspended dark ride. Experience an interactive attraction, full of suspense and unlimited possibilities. Guests can soar above creative environments while being suspended on an roller coaster. Optional laser tag can easily transform the award winning Cloud Coaster™ into the all-new "Sky Tag™," a suspended laser tag roller coaster. Sky Tag™ can fully immerse guests into creative worlds, while playing laser tag in the sky!

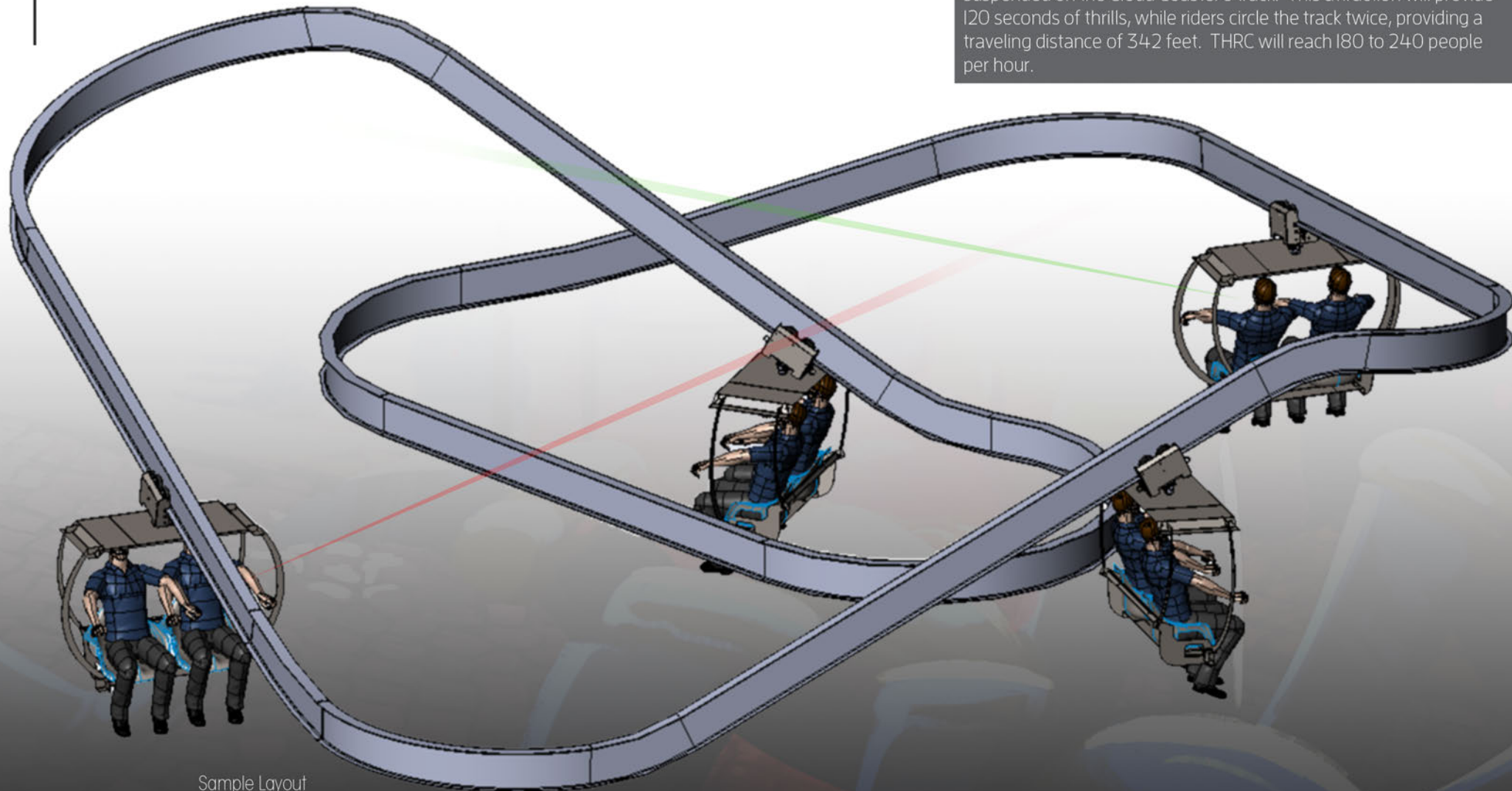
*The Cloud Coaster's™ track, and cart design, are engineered to be low cost, allowing more opportunities to invest towards theming and interactive laser tag solutions on the attraction. This attraction's goal is to offer a modular, high-capacity and affordable interactive dark ride solution. With space, cost and capacity being crucial, this attraction is perfect for FECs to amusement parks with a limited budget. The Cloud Coaster™ provides endless possibilities, offering any desired length, custom theme or track layout. This coaster can be designed to fit around existing structures, be designed to fit seamlessly indoors and designed to fit within existing attractions. Extreme Engineering is now making dark ride attractions possible to fit in spaces as small as 40 x 40 (1600 SQ FT).

CLOUD COASTER



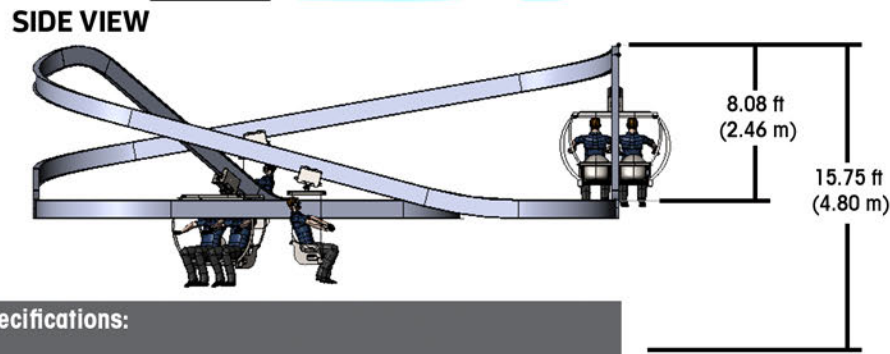
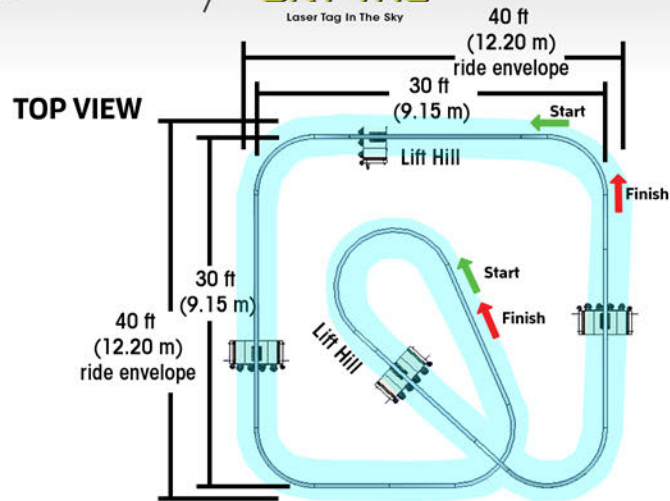
Sky Tag – Small Footprint Suspended Dark Ride / Laser Tag Coaster

This exciting configuration will soar guests high in the sky in complete darkness providing unexpected turns, drops and sudden stops. Optional laser tag can be integrated to create an exciting, interactive dark ride experience. Riders will soar above obstacles below, on 171 linear feet of track. The Sky Tag will launch 4, side-by-side vehicles, suspended on the Cloud Coaster's track. This attraction will provide 120 seconds of thrills, while riders circle the track twice, providing a traveling distance of 342 feet. THRC will reach 180 to 240 people per hour.



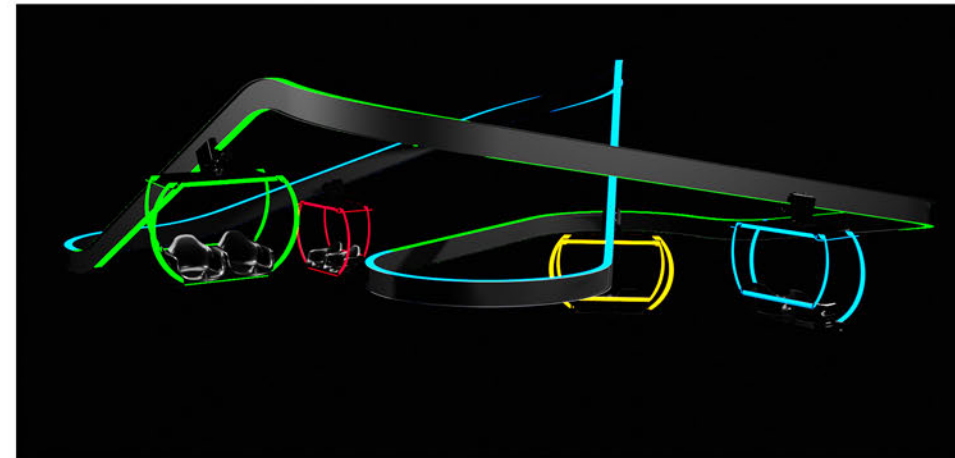
Sample Layout

CLOUD COASTER

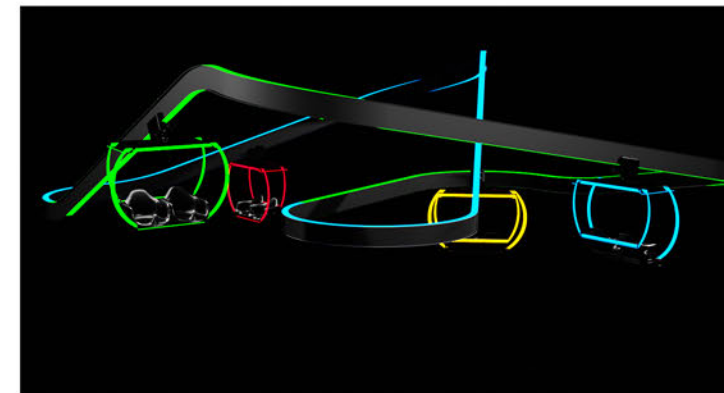
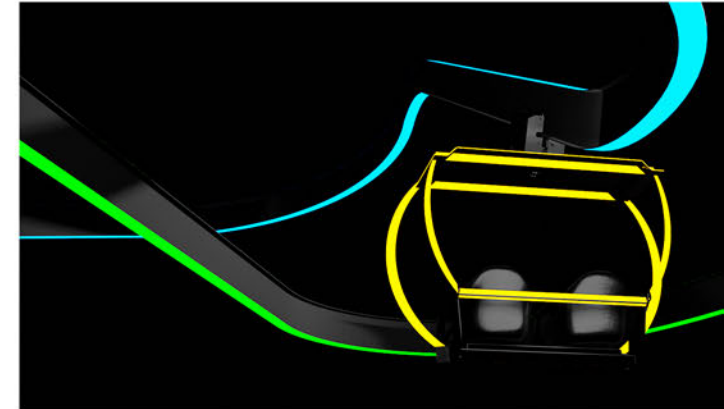
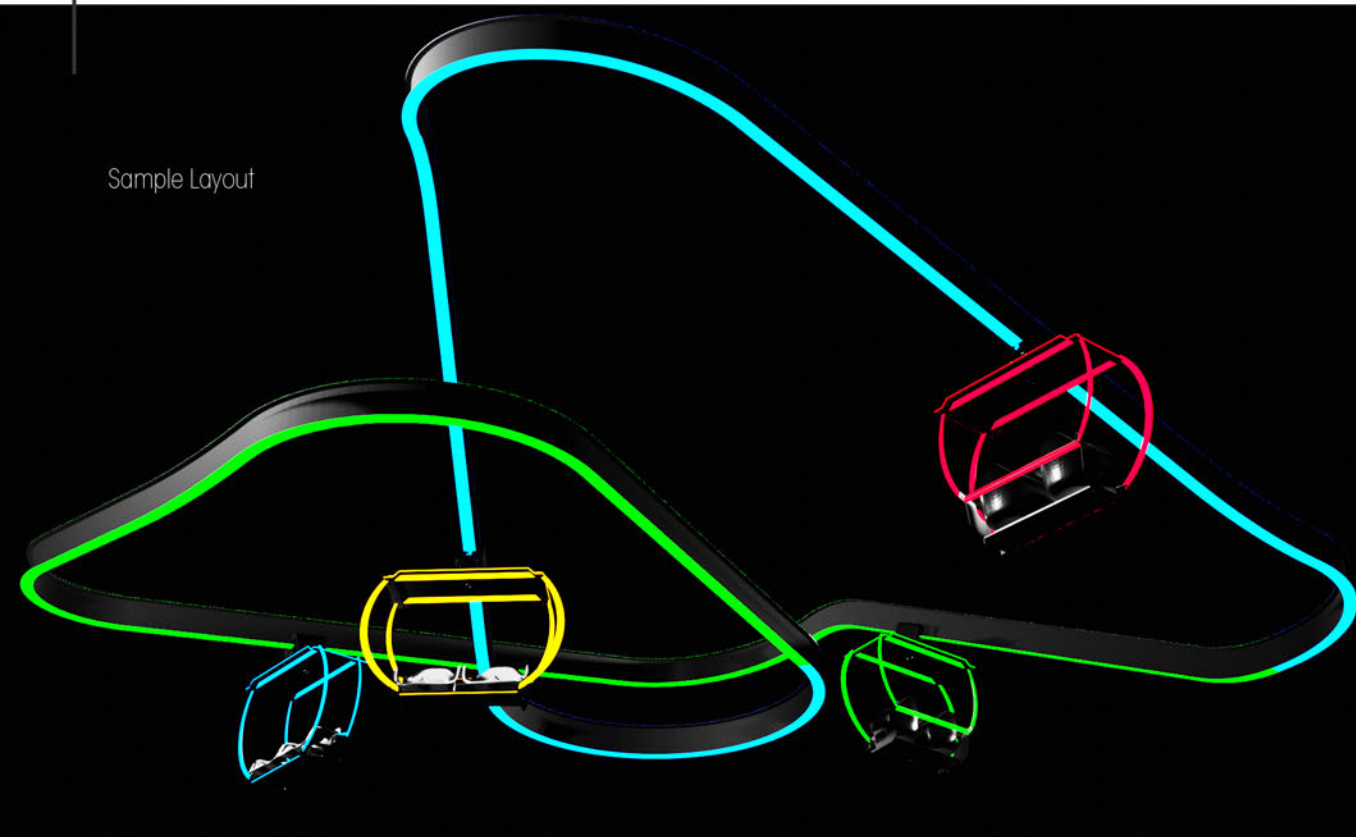


Ride Specifications:

- 171 linear feet of track (52 m).
- 342 linear feet of track travelled (104 m).
- Power requirements: 230V / 40AMPS
- Building height required is 16 ft (4.9 m).
- Vehicle Type: 2-Passenger Side-By-Side.
- Number of Vehicles: 4
- Max Speed: 4 feet per second (1.2 m per second).
- Minimum Rider Height: 40" (100 cm).
- Ride Time: 120 seconds.
 - Two Lift Hills (gravity driven).
 - Mobius Loop Design.
 - Single and Dual Dispatch Stations available.
 - Two times around track.
- THRC: 180 - 240 PPH
- Theming Options: Custom colors, ride vehicles, onboard lighting and sounds available.
- Minimum Operators Required: 1

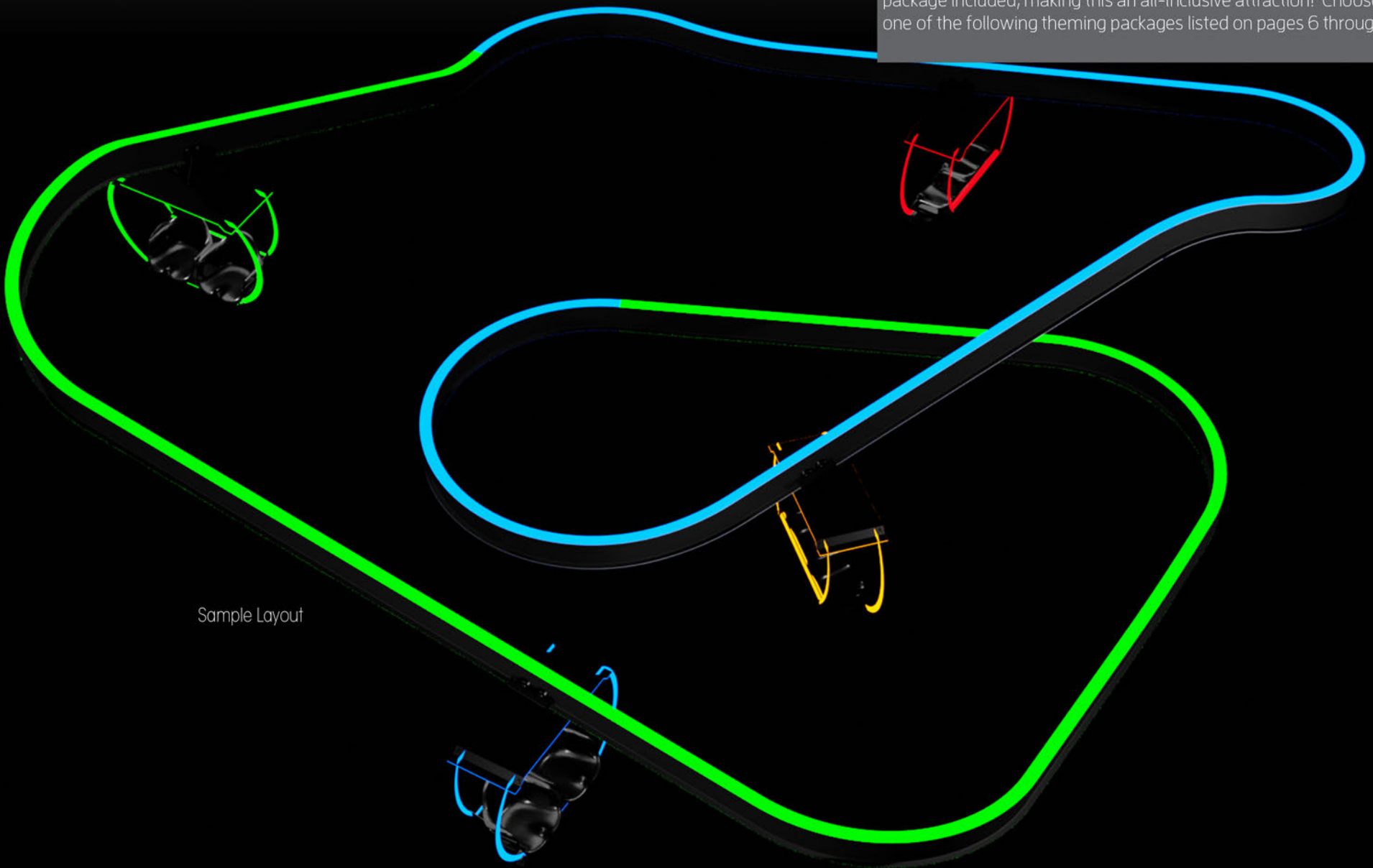


Sample Layout



Sky Tag – Choose your adventure!

With the Sky Tag, theming is limitless. Battle through space, jungles, old temples and more. Choose your theming to create a fully immersive experience, battling through the sky. Theming and Phaser package included, making this an all-inclusive attraction! Choose from one of the following theming packages listed on pages 6 through 17.



Sample Layout

CHOOSE YOUR THEMED EXPERIENCE FROM THE FOLLOWING...



ADVENTURE THEME

You are surrounded by the remnants of a long forgotten world and discover it is still very much alive. The jungle roams free, creeping over artifacts and hiding beasts.

Take shelter in the crumbling ruins, if you dare to venture near. Find evidence of previous explorers lurking as a sinister warning of what's to come. What you may find is unknown, but you can be sure it will be an adventure.



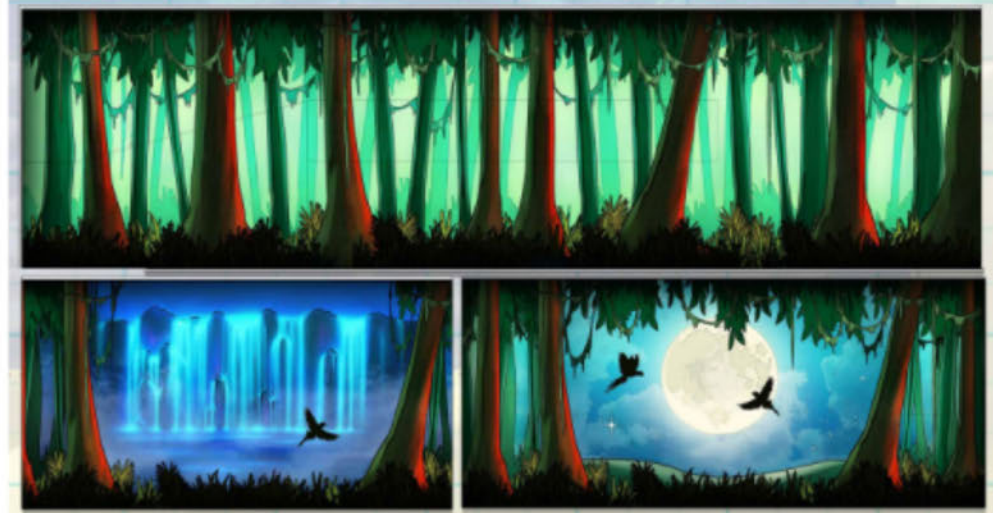
ADVENTURE THEMED MURALS

Choose Either Jurassic or Jungle

JURASSIC



JUNGLE



*Color palette can be modified to blend with final mural and prop selection for consistency.

ADVENTURE THEMED SIGNATURE PROPS

Choose one of the following props:

TIKI HEAD



SEED PODS



DINO HEAD



AIRPLANE



*Color palette can be modified to blend with final mural and prop selection for consistency.



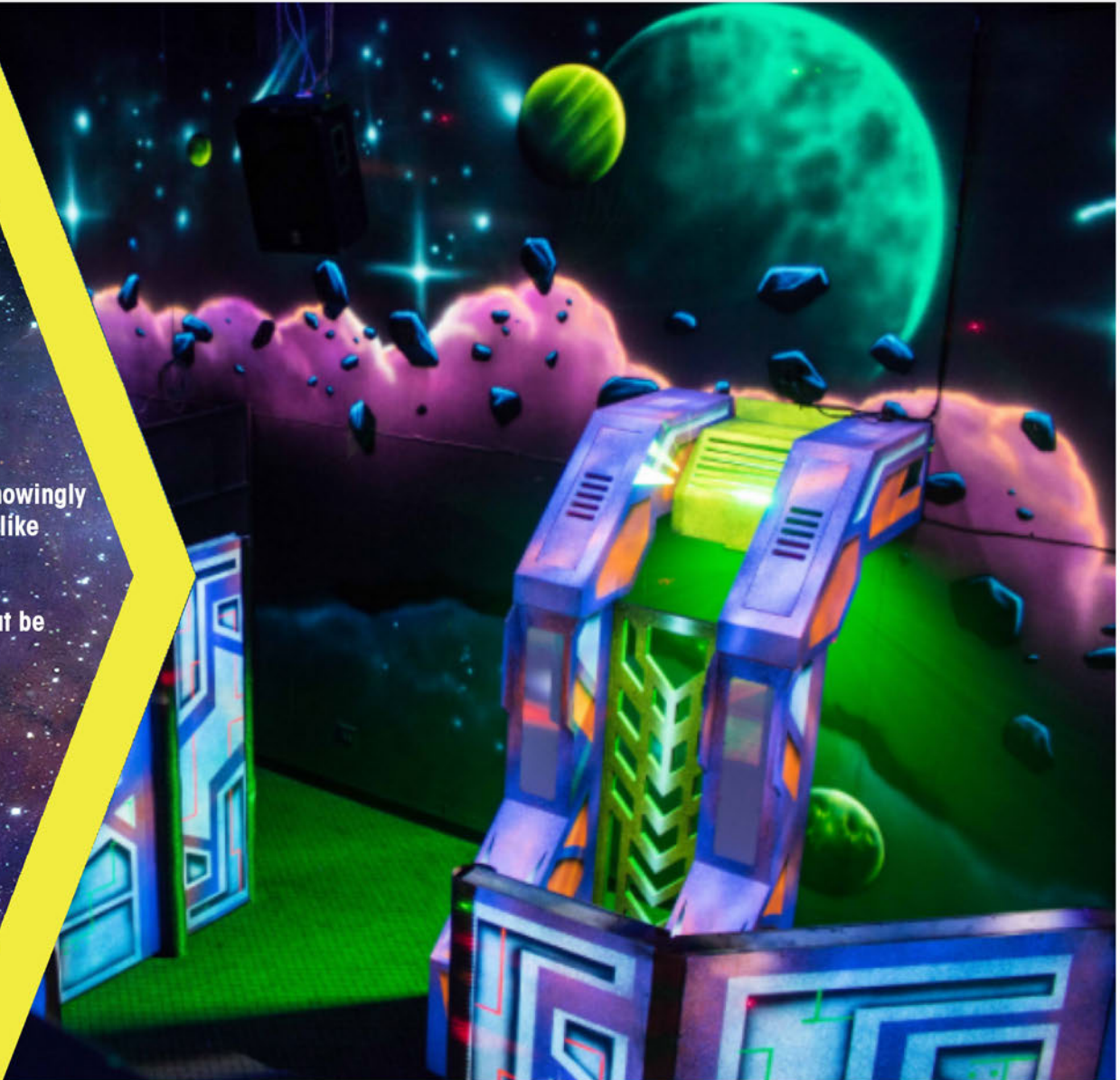
SAMPLE OF ADVENTURE THEMED ENVIRONMENT



GALAXY THEME

You traveled to a galaxy far, far away...but you unknowingly entered an extraterrestrial territory. And they don't like strangers.

This journey into the cosmos is a sight to behold, but be ready to set phasers to stun.



GALAXY THEMED MURAL

Galaxy Theme includes these type of murals:

INTERSTELLAR



*Color palette can be modified to blend with final mural and prop selection for consistency.

GALAXY THEMED SIGNATURE PROPS

Choose one of the following props:

UFO



DRONE



ALIEN CREATURE



SPACE SHIP



*Color palette can be modified to blend with final mural and prop selection for consistency.



SAMPLE OF GALAXY THEMED ENVIRONMENT



OCEAN THEME

Sail the high seas... if you dare!

But beware of Poseidon, the Kraken, or pirates seeking revenge.

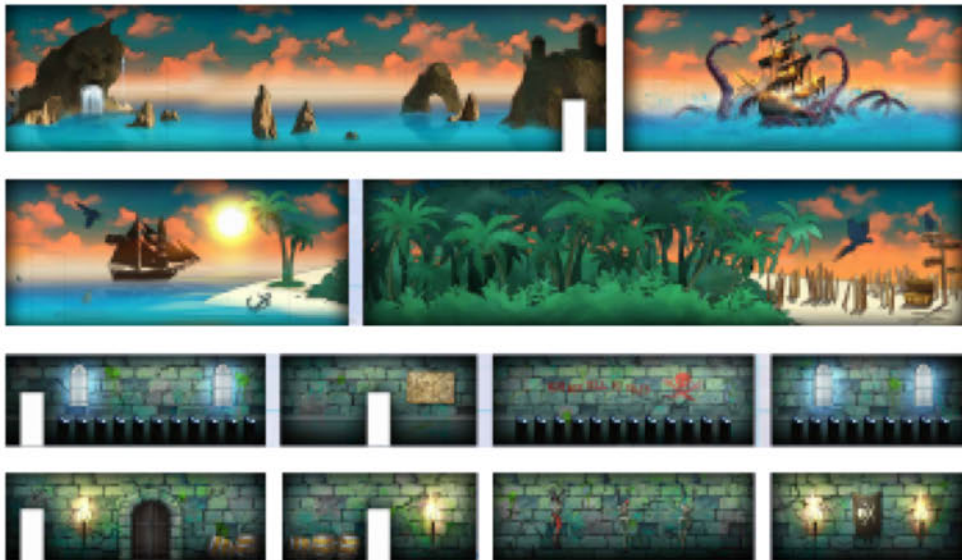
Grab your mates and get strapped in for this deep sea adventure!



OCEAN THEMED MURALS

Choose Either Pirate or Ocean, props to be discussed.

PIRATE



OCEAN



WILD WEST THEME

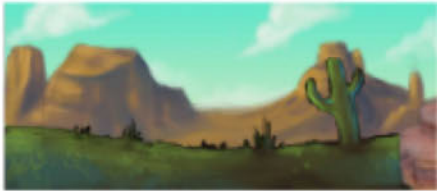
Round up your crew for some rootin' tootin' fun in the wild, wild west! Keep your eyes open and hands on your phasers - The quickest draw wins in this lawless country. Oh, and don't get distracted by the fools gold.



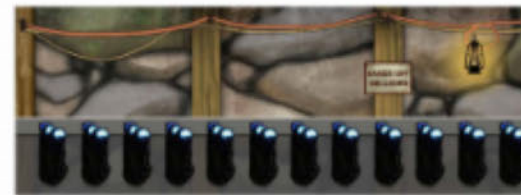
WILD WEST THEMED MURALS

Choose Either Old Western or Gold Mine, props to be discussed.

OLD WESTERN



GOLD MINE



*Color palette can be modified to blend with final mural and prop selection for consistency.

SKY TAG RIDE VEHICLE

The anatomy of the roller coaster cart

SWIVEL WITH SWAY CONTROL

The precision machined swivel safely attaches the coaster trolley to the Sky Tag's cart. The swivel also provides a dampening feature, for rider comfort, creating the real sensation of flying and floating through the air.

* STEEL CART

The ASTM rated steel cart is used to mount the coaster's seats and restraint system. This steel cart has precision aerospace aesthetics, creating overall weight reduction. Multiple colors options available.

RLR LAP BELT

Two point restraint using a buckle and End Plates.



M.B.S.™ TECHNOLOGY

The M.B.S.™, on the Sky Tag trolley, is an integral part of our passive magnetic braking device. This patent pending design uses magnetic breaking, requiring no power, with a lifespan of 300 years! Our rare earth magnets are one-of-a-kind, and the first in the industry, to use Eddy Current principals applied to a coaster cart's trolley. The

M.B.S.™ is also ecofriendly, saving on expensive power requirements needed for other type of braking methods. The M.B.S.™ can be adjusted to apply strong or as little braking force as necessary.

* LASER TAG SENSORS

Each ride vehicle comes with several sensors mounted around the steel cart, giving opponents several locations to shoot their phasers at.

PHASERS

Each ride vehicle comes with two phasers, allowing guests to team up against other riders. These Phasers are packed with exciting features with a full color touch screen, selfie-camera, vibration, voice speaker, and multi-color RGB LEDs.

ERGONOMIC SEAT DESIGN

The coaster seats are custom sculpted, to fit most body types, providing the maximum comfort during use. Seats also have integrated handbars, allowing riders to comfortably hold onto the sides. The coaster seats are extremely easy to sanitize and wipe down.

*Note: Steel cart design and laser tag sensors might slightly differ from image above.

STANDARD LASERBLAST SYSTEM INCLUDED

**Phasers - QTY 8**

The Phasers are constructed of rugged injection molded polycarbonate with a rubber coating molded on top for comfort and durability. The microprocessor in the phasers are shock mounted to provide trouble free operation. Each Phaser is equipped with a wide-lensed and narrow aiming laser. The Phasers come fully packed with various features such as super bright LEDs, color touchscreen display, selfie-cam, audio and vibration. The tagging range is up to 125 feet!

**Sensors / Emitters- QTY 13**

Vibrating and LED sensors are placed on the ride vehicle and throughout the battle arena.

Phaser Batteries

Lithium Iron Phosphate batteries, the latest in development chemistry, provide the best attributes in charging and durability. Batteries can last up to 20 hours on a full charge.

**Elements / Cyber Targets - QTY 16**

The CyberBlast elements are multi-purpose interactive devices that enhance gameplay in your battle arena. Each element is equipped with IR sensors, a 25 watt speaker, and bright LEDs. These sensors are configured to disable targets, recharge, or act like mines. Game scripting can be customized to provide uniquely tailored special effects for extra interactivity and a more immersive guest experience.

**Touchscreen Game Controller - QTY 1**

The game controller is the operator interface for the system. The game controller changes game variables. It is also used to change various included games like Team Elimination to King of the Arena.

STANDARD LASERBLAST SYSTEM INCLUDED CON'T

4 ANIMATED INTERACTIVE PROJECTOR TARGETS

Choose from several pre-built themes or we can create custom animations.

The projected opponents can change as the ride continues. Each projector can switch between 5 different opponents, so that players see a different one each time through.



Quantity: 2, Trivia Tag Terminals



Trivia Tag Stations for the slow inclines. Trivia flashes across the screen and players can shoot to answer the questions. Correct answers will be rewarded with points.



CALL FOR DETAILS

Includes Extreme Engineering Ride System, Creative Works Theming Package and LaserBlast Pro Components. Shipping (lower 48 U.S. States), installation and training for all aspects of attraction are included.

Custom Options Also Available For Additional Costs.

U.S. Patents and Patents Pending, Proudly Built in the U.S.A.



GET IN TOUCH

Address: 1391 Flat Creek Road, Athens, Texas 75751, USA;

Ph: +1-916-663-1560

Email: info@extremeengineering.com

Visit: www.extremeengineering.com

U.S. Patents 6,083,142, 6,390,952, 6,659,496, 7,182,695 and Patents Pending. Extreme Engineering, Speed Harness, Fun is Our Business, Fly Wire Zipline, High-Action Adventures, Extreme Air, Rapid Gravity Ride, Flex Pole Technology and Auto-Zip are U.S. registered trademarks of Extreme Engineering. This material is copyrighted and may not be duplicated without written permission from Extreme Engineering.