



extreme

ENGINEERING

ENGINEERING DESIGN / FAMILY COASTERS / ADVENTURE RIDES

SINCE 1995

WE SHARE YOUR PASSION...

OUR CULTURE IS OUR CUSTOMERS

 Extreme Engineering is a manufacturing and engineering firm of award winning amusement rides based outside of Dallas, Texas. Since 1995, Extreme Engineering has been recognized as the industry leader in family-friendly attractions to world-class destinations and amusement parks. With over 1,000 customers worldwide, chances are you have experienced our rides firsthand. Extreme Engineering has provided innovative solutions to both Fortune 100 and 1000 companies, such as Six Flags, Disney, Universal, Bluegreen Resorts, Holiday Inn and others. For over 25 years when it comes to safe, new and exciting attractions Extreme Engineering has been the answer.

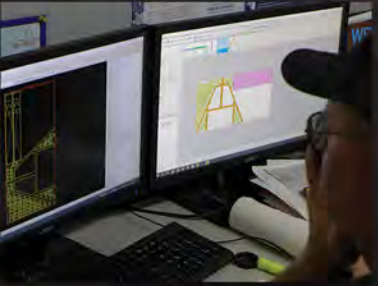
Today Extreme Engineering is the industry's leading choice for engineering design, family coasters and adventure rides. We make endless design opportunities possible through our talented team of design engineers and experienced sales experts. From award winning attractions to engineering design, let's just say we have your creative mind's back! We are passionate, active industry members. Our team volunteers on safety committees, helps with creating industry standards to even serving on the IAAPA Board of Directors. We do this because we believe in this industry, we believe in safety and truly understand the importance of creating positive experiences for families to enjoy.

Our staff wakes up every day ready to ride the next new rollercoaster and visit world-class theme parks. We are always prepared to design the future in entertainment but we don't just stop here. Innovation, industry standards, experience and breakthrough designs come standard in all of our attractions. In order to preserve our industry's future, Extreme Engineering understands the importance of integrity, honesty, creativity and the protection of ideas. While others might try to attempt what we do, our company will most certainly have already moved on. We are dynamic in what we do, we believe in inventing forward. Our staff constantly looks ahead and strives on giving customers the real cutting-edge they deserve. Our company motto, "fun is our business," is what we believe in. This belief allows us to transform creative ideas into reality.


Pictured: Jeff Wilson, CEO of Extreme Engineering.

ENGINEERING DESIGN

Brilliant engineers. Adrenaline seeking designers. We're the ultimate left brain/right brain company.



WE LEAD THE INDUSTRY. SIMPLICITY, QUALITY & INNOVATION ARE STANDARD IN ALL OF OUR DESIGNS.

 Our founder:

Mr. Wilson has a mechanical and aeronautical engineering degree from California State University Long Beach with over 40 years in engineering and design experience. He has worked for companies such as Hughes Aircraft, American Hospital Supply and Hewlett Packard. Mr. Wilson has also consulted for Bell Helmet, NASA, Disney, Universal, Icon Airplanes, Flowline, and others. Jeff Wilson has been operating his engineering firm for over 25 years with focus on mechanical, aerospace, structural and electrical designs.



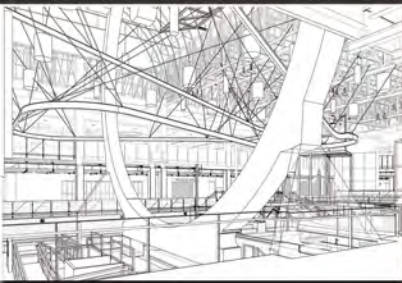
DESIGNS ARE ENGINEERED, TESTED & BUILT IN AMERICA.

Our state of the art factory, with state of the art people.

Today Extreme Engineering is recognized as the industry leader, supporting amusement ride manufacturers and A&E firms, with creative, turnkey product development solutions and manufacturing support. All of Extreme Engineering's designs exceed industry standards such as CE, ASTM, EU, TUV and can meet CSEI. We also have access in providing PE stamps (in all 50 states) across the U.S. Currently our design firm has over 45 patents, such as magnetic braking solutions on suspended roller coasters, aerospace designs on fighter jets, automatic delay devices to decelerating components used on funiculars, trams and ziplines.



Our firm has over 6 talented design engineers with offices in both California and Texas. Extreme Engineering's headquarters is outside of Dallas, Texas with a 50,000 SQ FT state-of-the-art production and R&D facility on over 6 acres, the California office resides on 5 acres. The Texas production plant is lead by AWS certified welders with additional experts in manufacturing, horizontal integration and assembly. Our factory is operated by a rigorous quality control process and driven by a computer driven MRP system for managing tooling, assembly parts and hardware. Advanced testing methods are applied to all of the products and parts assembled in our factory.



WE BREAK THE MOLD

Our creative team of engineers and designers work non-stop to dream up innovative and ground breaking products that all meet or exceed engineering quality standards so customers can oversee operations with confidence. Using state-of-the-materials and cutting-edge technology, Extreme Engineering empowers customers with the highest quality and reliable products to fit their needs, budget and timelines.

WHAT WE OFFER:



MECHANICAL ENGINEERING

With over 4 decades of expertise in mechanical engineering and design, we can assure you the product will be built correctly, safe and precise the first time. Engineering is in our DNA. We live, breath and build creative solutions that are either a first in the industry or a major improvement to an existing product. We got you covered.



ANALYSIS

We don't just build something, we test it! The most crucial step in all of our designs is detailed analysis. We make sure analysis is applied to all product designs prior to production. Our expertise in analysis procedures provides the right design for the right job. Each analysis we complete will include: Thermal/Flow, Structural, Tolerance & EMI/RFI containment.



ELECTRICAL ENGINEERING

We partner with some of the best electrical engineers in the field. Many of our product designs involve electrical hardware development, software development and electrical testing. If your product design requires electrical engineering we can manage this for you.



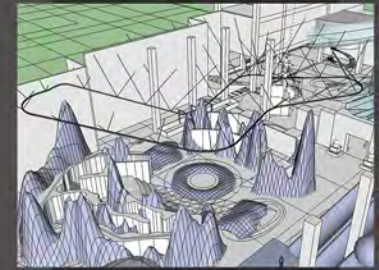
PROTOTYPING

Quick prototyping allows our customers to ensure the function, design and aesthetics of their product design. We can offer a full scale prototype to a scaled 3D printed or CNC first article. We work with some of the latest technologies available in providing accurate prototypes that help our customers visualize their reality.



PRODUCTION

Our production facility can accommodate high-volume, precision products and parts at competitive rates. From transport trailers for expensive airplanes, roller coasters, tractor attachments, custom brackets, support columns to funiculars, we can build it all! We can easily ship anywhere in the world with the Port of Houston, one of the world's largest ports, only hours away from our factory. With our AWS welders, expert assembly team, process engineers and project managers we can deliver the best products in the world in a timely manner.



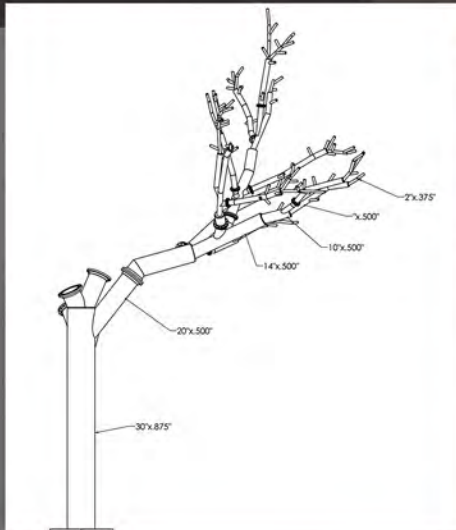
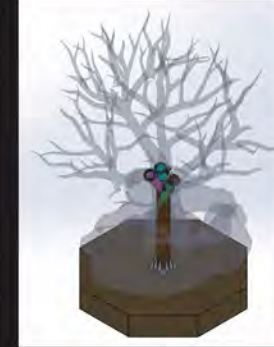
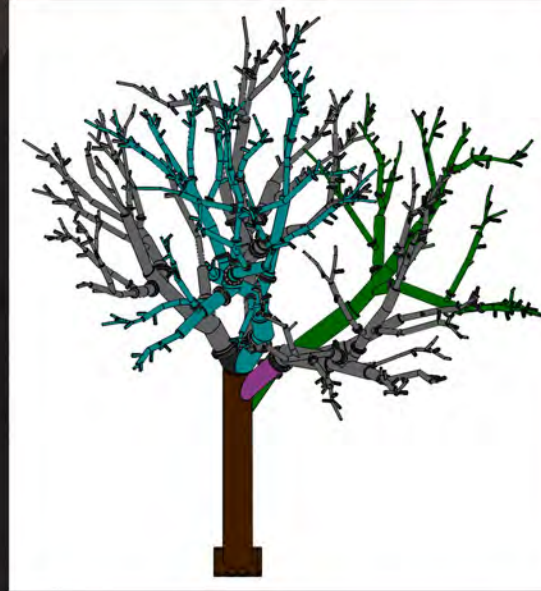
SOME OF OUR AWESOME WORK...

We design, value engineer, test and build products forward.



DOLLYWOOD'S TREE PROJECT

The creative team from Life Formations, an industry leader in theming and animatronics, partnered with Extreme Engineering to build Dollywood's latest expansion project at the park, Wildwood Grove. Extreme Engineering turnkeyed the entire steel structure, providing the structural engineering, design, P.E. stamping, project management and fabrication of the massive structure. The structure had to also meet CWS and D1.1 weld standards. Dollywood's "Tree of Life" measured at over 50 feet tall and 50 feet wide. The tree had to include hundreds of custom designed branches that would be easily clocked and bolted to the base. Each branch had to hold over 650 lighted butterflies, including over 9,000 leaves.



SOME OF OUR AWESOME WORK...

We design, value engineer, test and build products forward.



DOLLYWOOD'S TREE PROJECT CON'T



SOME OF OUR AWESOME WORK...

We design, value engineer, test and build products forward.



DOLLYWOOD'S TREE PROJECT CON'T



SOME OF OUR AWESOME WORK...

We design, value engineer, test and build products forward.



DOLLYWOOD'S TREE PROJECT CON'T



SOME OF OUR AWESOME WORK...

We design, value engineer, test and build products forward.



TRANS STUDIO BALI'S STUNT SHOW MINE CART

Extreme Engineered partnered with The Producers Group, a premier provider of production and design services for destination attractions worldwide, on their Trans Studio Bali project. The Producers Group was in need of a custom gag for Trans Studio Bali's anchor stunt show. The show required a custom mine cart on a coaster track that allowed stuntmen to easily control the speeds of the carts while battling in between scenes. The cart system also had to disappear under the stage and then easily reappear for the next act. Extreme Engineering custom built the coaster track, including a self-supporting structure to not entirely rely on the building's slab. The carts were also designed to use eddy current braking that could easily be tuned by the rider.



Illustrations by: TPG



Illustrations by: TPG



SOME OF OUR AWESOME WORK...

We design, value engineer, test and build products forward.



UNIVERSAL'S SUSPENSION BRIDGES

Extreme Engineering was hired by Universal to design and fabricate their signature suspension bridges at the famous waterpark, Volcano Bay. The bridges had to be self-supporting, provide additional support to the existing columns and also have the feel and look of worn, wooden planks when walking across. The bridges had to meet Universal's strict standards, including CWI, NDT and P.E. stamping.



UNIVERSAL'S ROLLER COASTER ANCHORS

Extreme Engineering provided roller coaster anchors, for several other roller coaster manufacturers, used at various Universal parks. Each anchor was precision made, tested and built to each roller coaster manufacturer's standards.



SOME OF OUR AWESOME WORK...

We design, value engineer, test and build products forward.



SAN DIEGO SYMPHONY

Extreme Engineering was subcontracted to help on the construction of the all-new San Diego Symphony, located at the Port of San Diego. The San Diego Symphony is a top-notch stage located at the scenic spot, Embarcadero Marina Park South, overlooking the waterfront. Extreme Engineering provided part of the steel support structures, holding up the beautiful arching domes. The team at Extreme Engineering also value engineered the steel beams to support high wind loads experienced in the harbor, including providing special coatings to prevent corrosion. Overall aesthetics were enhanced, from the original design, with precision laser cut tension mounts to support the hanging canvas. These mounts would be visible and exposed to the general public. The mounts were redesigned to exceed the overall look and feel of the symphony's modern design while still maintaining structural integrity and wind load requirements.



SOME OF OUR AWESOME WORK...

We design, value engineer, test and build products forward.



SAN DIEGO SYMPHONY CON'T



SOME OF OUR AWESOME WORK...

We design, value engineer, test and build products forward.



SAN DIEGO SYMPHONY CON'T



SOME OF OUR AWESOME WORK...

We design, value engineer, test and build products forward.

SERIMAX REACH ROD

Serimax is an industry leader in welding solutions for offshore and onshore pipelines and fabrication, primarily focusing in oil, gas and nuclear industries. Extreme Engineering was hired to manufacture Serimax's automatic, robotic welding components. Each component was precision welded and laser cut with custom color and coatings to withstand harsh environments.



SOME OF OUR AWESOME WORK...

We design, value engineer, test and build products forward.



SILVER DOLLAR CITY'S FLUME RIDE

Extreme Engineering was asked to partner with RES to help engineer and fabricate Silver Dollar City's flume ride attraction opening in 2020 called "Mystic River Falls." The famous park set in Branson, Missouri relied on several suppliers, with Extreme Engineering building the flume channels and other precision ride components. Extreme Engineering was able to value engineer the original parts, saving the client both on fabrication costs and delivery timelines. Each part was fabricated through precision laser machines and finished with Extreme Engineering's certified welders. All channels were then special coated, per Silver Dollar City's requirements to last the harsh environment underwater. The ride will be ready to operate in 2020.



SOME OF OUR AWESOME WORK...

We design, value engineer, test and build products forward.



SILVER DOLLAR CITY'S FLUME RIDE CON'T



SOME OF OUR AWESOME WORK...

We design, value engineer, test and build products forward.



SILVER DOLLAR CITY'S FLUME RIDE CON'T



SOME OF OUR AWESOME WORK...

We design, value engineer, test and build products forward.



SILVER DOLLAR CITY'S FLUME RIDE CON'T

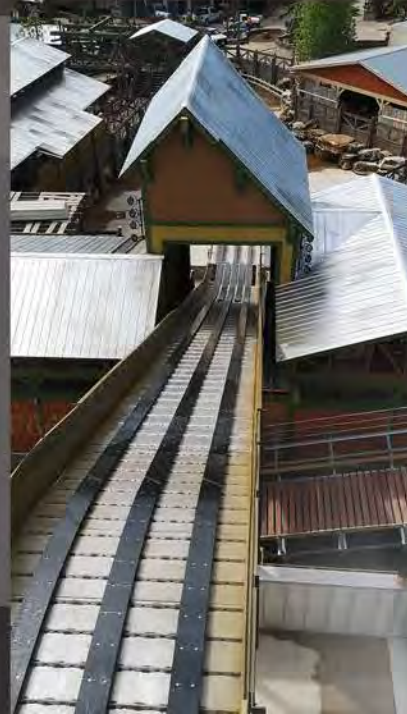


SOME OF OUR AWESOME WORK...

We design, value engineer, test and build products forward.



SILVER DOLLAR CITY'S FLUME RIDE CON'T



SOME OF OUR AWESOME WORK...

We design, value engineer, test and build products forward.



RESORT ADVENTURE TOWER

Extreme Engineering was hired by a master planner to work with JW Marriott's latest resort destination near Disney World in Orlando, Florida. JW Marriott worked closely with Extreme Engineering's team to provide a branded adventure tower that blended with their thoughtfully designed hotel, offering inviting social spaces and amenities with nightly views of theme park fireworks from the rooftop terrace. Extreme Engineering custom designed an adventure tower to be placed on the rooftop terrace, providing participants an incredible view of the surrounding theme park landscapes. The tower was equipped with Extreme Engineering's patented auto-belay safety devices and custom facades that amplified the JW Marriott's brand. The tower was designed to exceed the high wind load requirements in the state of Florida.



SOME OF OUR AWESOME WORK...

We design, value engineer, test and build products forward.

O Z M O Y ROPES COURSE HEXI POD

Ozmoy, an industry leader in steel ropes courses, partnered with Extreme Engineering to build precision ropes course platforms and railings. Ozmoy's patented ropes course design utilizing a Hexi-Pod configuration, providing a modular and large adventure course platform. Extreme Engineering enhanced and value engineered the design of the platforms, saving the client approximately 20% on production costs. Fabrication, coatings, redesign and testing were provided by Extreme Engineering.



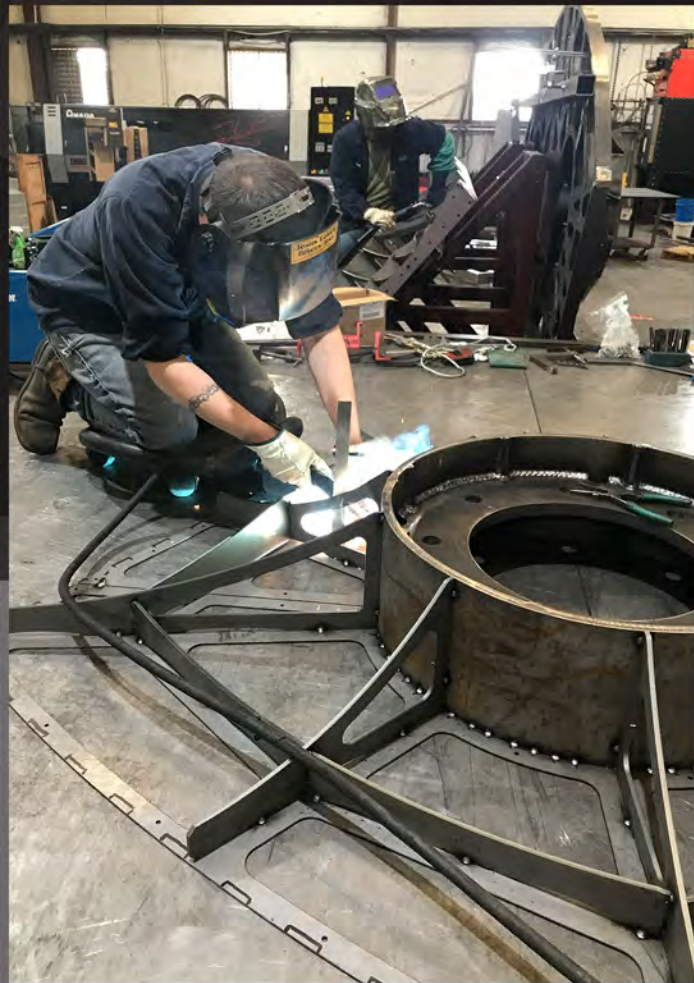
SOME OF OUR AWESOME WORK...

We design, value engineer, test and build products forward.



O Z M O Y

ROPES COURSE HEXI POD CON'T



SOME OF OUR AWESOME WORK...

We design, value engineer, test and build products forward.



O Z M O Y

ROPES COURSE HEXI POD CON'T



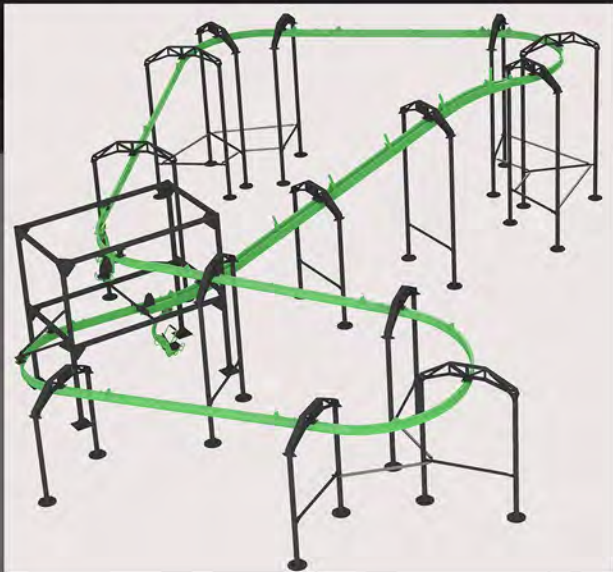
SOME OF OUR AWESOME WORK...

We design, value engineer, test and build products forward.



CLOUD COASTER VINPEARL LAND

One of the latest outdoor roller coaster projects to date has opened at the new park in Vietnam, Vinpearl Land Phu Quoc. This was Extreme Engineering's largest outdoor Cloud Coaster project in Asia with a track length around 400 linear feet (122 meters). The family coaster was purposely designed to be a glider experience, giving kids a fun and smooth experience with views above the iconic landmarks of the park. With careful consideration, the coaster had to include custom finishes, and paint coatings, to adhere to the aggressive weather in southeast Asia. Extreme Engineering was able to find a way to fit the coaster in a very tight space, minimizing the impact on real estate of the park. Custom cart theming, utilizing vivid colors, gave the Cloud Coaster a local and custom traditional feel. The attraction was designed to allow post install anchoring, eliminating heavy duty construction costs. Coaster columns were also designed to architecturally fit within the park's themed environment.



SOME OF OUR AWESOME WORK...

We design, value engineer, test and build products forward.



CLOUD COASTER VINPEARL CON'T



SOME OF OUR AWESOME WORK...

We design, value engineer, test and build products forward.



CLOUD COASTER VINPEARL CON'T



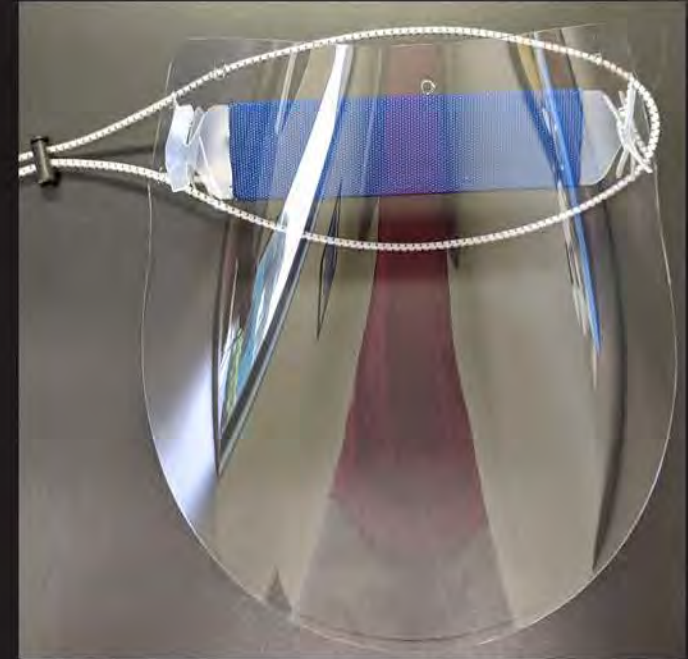
SOME OF OUR AWESOME WORK...

We design, value engineer, test and build products forward.



FACE-IT PPE SHIELDS

Identifying the high demand in PPE gear during today's climate, Extreme Engineering designed a clear protective face shield for droplet protection. The Extreme PPE Shield can be worn by anyone interacting with the public, in business or in personal use while outside the home. This shield offers a simple physical barrier from direct splatter or fluids, providing an extra layer of protection. Our shield is a great addition to arm with your current N95 compliant mask. The Extreme PPE Shield is made of high-grade, shatter resistant polycarbonate. The one-size-fits-all shield comfortably secures around the head with an elastic cord and cord lock. Easy assembly is required so that up to 100 shields can ship in a single box. Customized theming and/or lighting options available to snap onto shields, tailoring to your company's brand.



**LET'S KICK COVID
TO THE CURB**



PPE SHIELDS - MADE IN THE USA



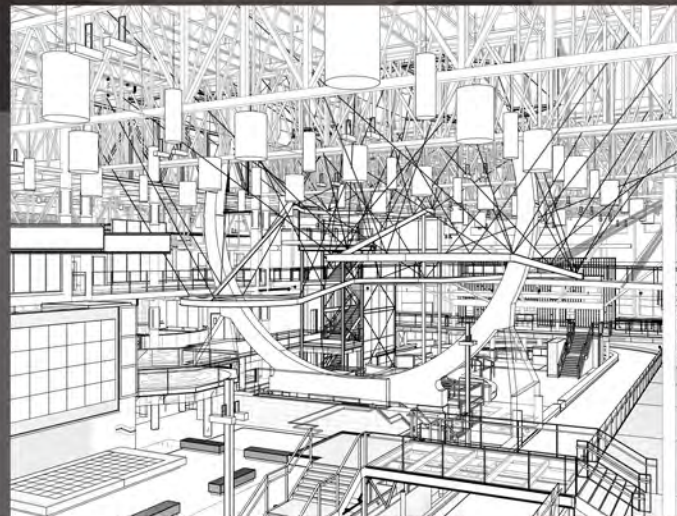
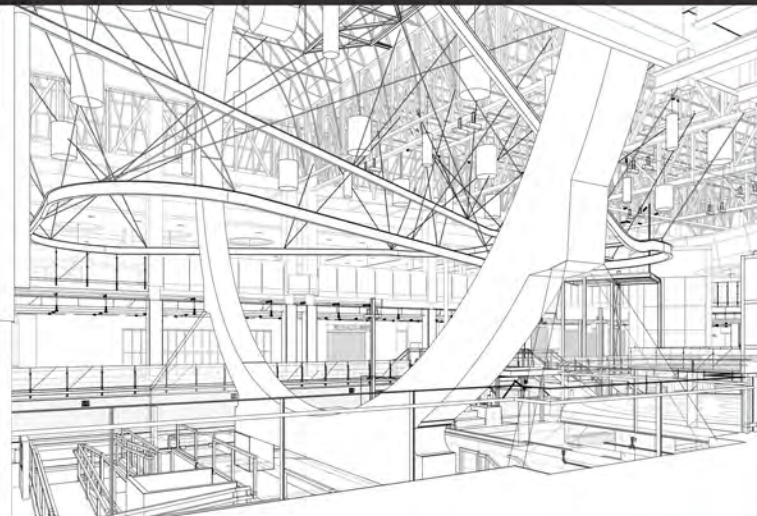
SOME OF OUR AWESOME WORK...

We design, value engineer, test and build products forward.



MEGA PARC CLOUD COASTER

The steampunk themed amusement park, Mega Parc, is the largest indoor amusement park in Quebec and second largest in the nation. Oxford Property group relied upon Extreme Engineering to design a family friendly glider next to their existing Mack roller coaster. Our engineering team worked on the idea of making the Cloud Coaster soar through a spokeless Ferris Wheel. The coaster track had to be free floating, include no coaster columns, mounted within the building's existing structure and soar around other surrounding attractions. This engineering marvel allowed the track to successfully look like it was floating above the sky and through a Ferris wheel, making our Cloud Coaster the very first in North America, second in the entire world, to accomplish this thrilling configuration.



SOME OF OUR AWESOME WORK...

We design, value engineer, test and build products forward.



MEGA PARC CLOUD COASTER CON'T



SOME OF OUR AWESOME WORK...

We design, value engineer, test and build products forward.



MEGA PARC CLOUD COASTER CON'T



SOME OF OUR AWESOME WORK...

We design, value engineer, test and build products forward.



MEGA PARC CLOUD COASTER CON'T



SOME OF OUR AWESOME WORK...

We design, value engineer, test and build products forward.



MEGA PARC CLOUD COASTER CON'T



SOME OF OUR AWESOME WORK...

We design, value engineer, test and build products forward.



MEGA PARC CLOUD COASTER CON'T



SOME OF OUR AWESOME WORK...

We design, value engineer, test and build products forward.



MEGA PARC CLOUD COASTER CON'T



SOME OF OUR AWESOME WORK...

We design, value engineer, test and build products forward.



ICON'S A5 AMPHIBIOUS TRANSPORT SYSTEM

Extreme Engineering was hired by Icon Aviation to design and build their amphibious transport system for the A5 aircraft. The design had to safely load and also lower the plane on ground or in water. Extreme Engineering prototype tested, engineered and fabricated the transport system to have the same look and feel as the A5 aircraft. The system had to be corrosion proof and include submergible hydraulics, which would guide the aircraft on and off the trailer. The control system could also be operated by a smartphone App.



FROM COASTER COLUMNS, FACADES TO STRUCTURES

Extreme Engineering has worked with various suppliers in multiple industries across the globe. From roller coaster columns, queuing gates, facades to precision commercial equipment, we got you covered. Our team of engineers, certified welders and project managers specialize in value engineering your product, parts and/or components. We strive on providing the best value, quality and on time results in the industry.



Extreme Engineering
1391 Flat Creek Road
Athens, TX 75751
916.663.1560
www.extremeengineering.com



FUN IS OUR BUSINESS™

U.S. Patents 6,083,142, 6,390,952, 6,659,496, 7,182,695 and International Patents Pending. Extreme Engineering, Extreme Engineering's Logo, Speed Harness Fun is our Business, Fly Wire Zipline, High-Action Adventure, Adventure Products, Extreme Air, Rapid Gravity Ride, Cloud Coaster, Flex Pole Technology, Auto-Zip, and Decelinator are U.S. registered trademarks of Extreme Engineering. We take our intellectual property seriously and protect all of our patents, trademarks and copyrights. Our company believes in the protection of ideas so that creative minds can always invent. Help us by honoring originality in this industry. Always buy from the source so that patents can be treated with respect. This material is copyrighted and may not be duplicated without written permission from Extreme Engineering.

Catalog design by: Phil Wilson